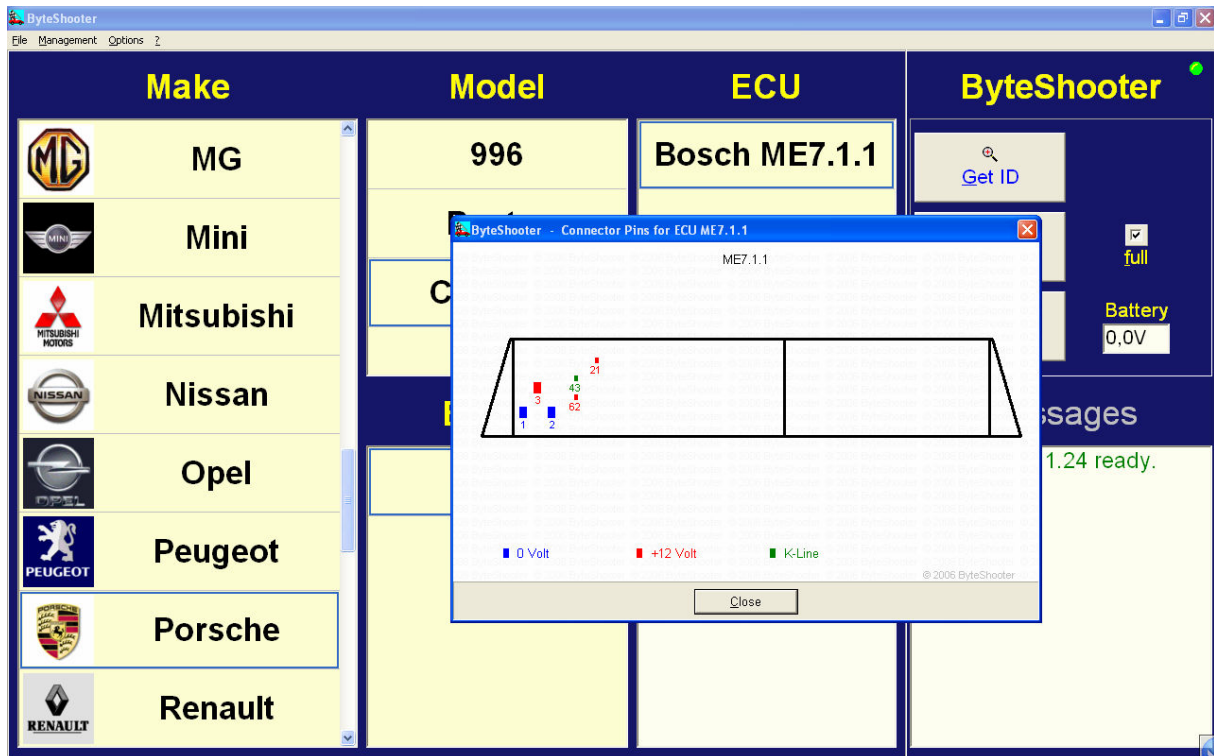


How to use the toolbox function

Find out what bootpin picture fits to your ECU. The bootpin connection point is marked in each picture. The "bootpin" is a resistor that we delivered with the ByteShooter.

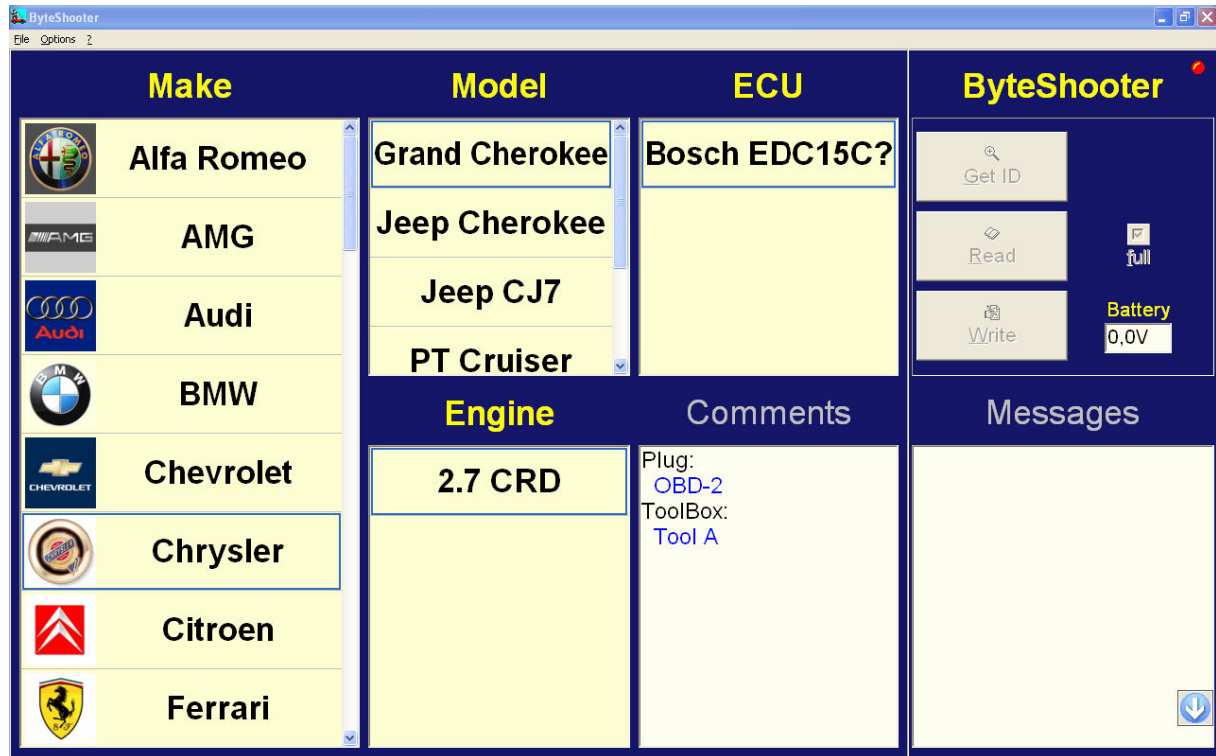
Connect the ECU to the ByteShooter. Use a special connector made for this ECU or the multi-connector together with the pin instruction from ByteShooter:

Example:

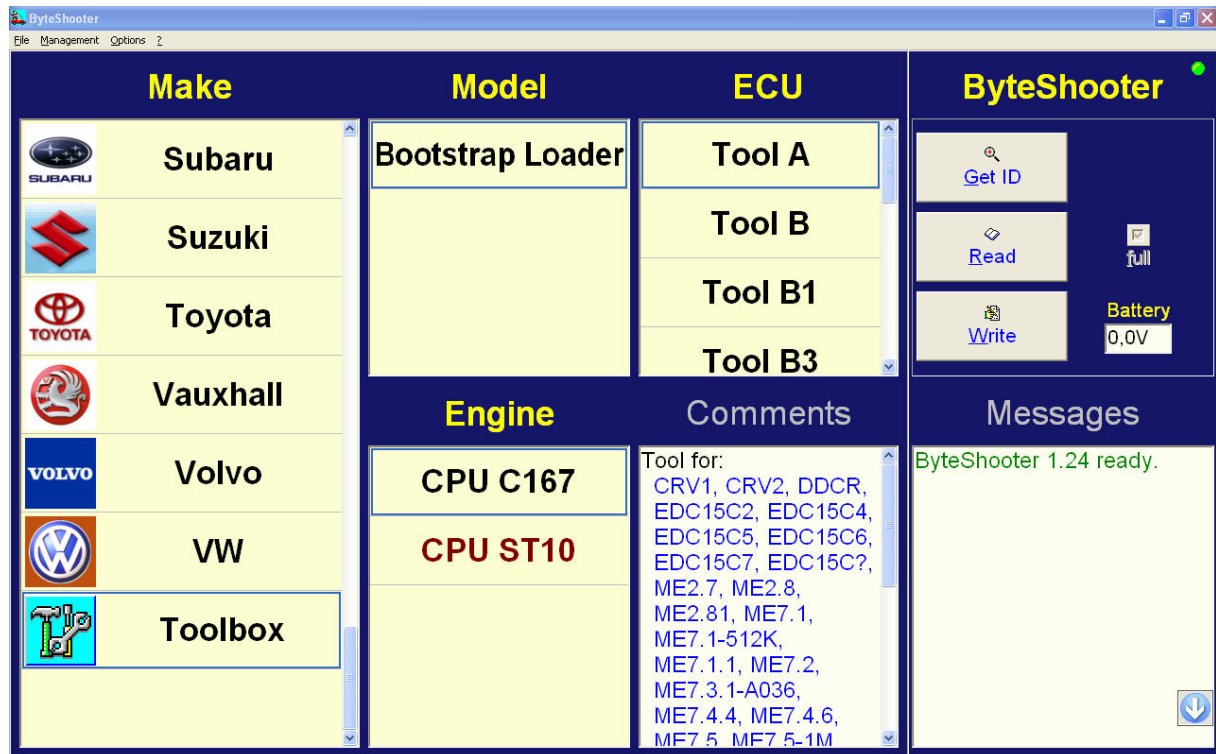


In the comment box you see what tool function you must use for this ECU:

In this example its tool A



open the toolbox menu:



- connect everything.
- on the power supply only connect negative(-) to the ecu.
- connect the bootpin with the negative (-) on power supply on one side and the bootpin point in the picture on the other side
- switch on the power supply (remember: only negative (-) is connected to the ecu!)
- within 10 seconds press the “get ID” button in the toolbox menu
- within the next 10 seconds connect positive (+) to the power supply
- right lower corner you get the ID now.
- disconnect the bootpin
- now you can read and write the ecu

Note: these steps must be followed exactly, especially the detailed power connection procedure!